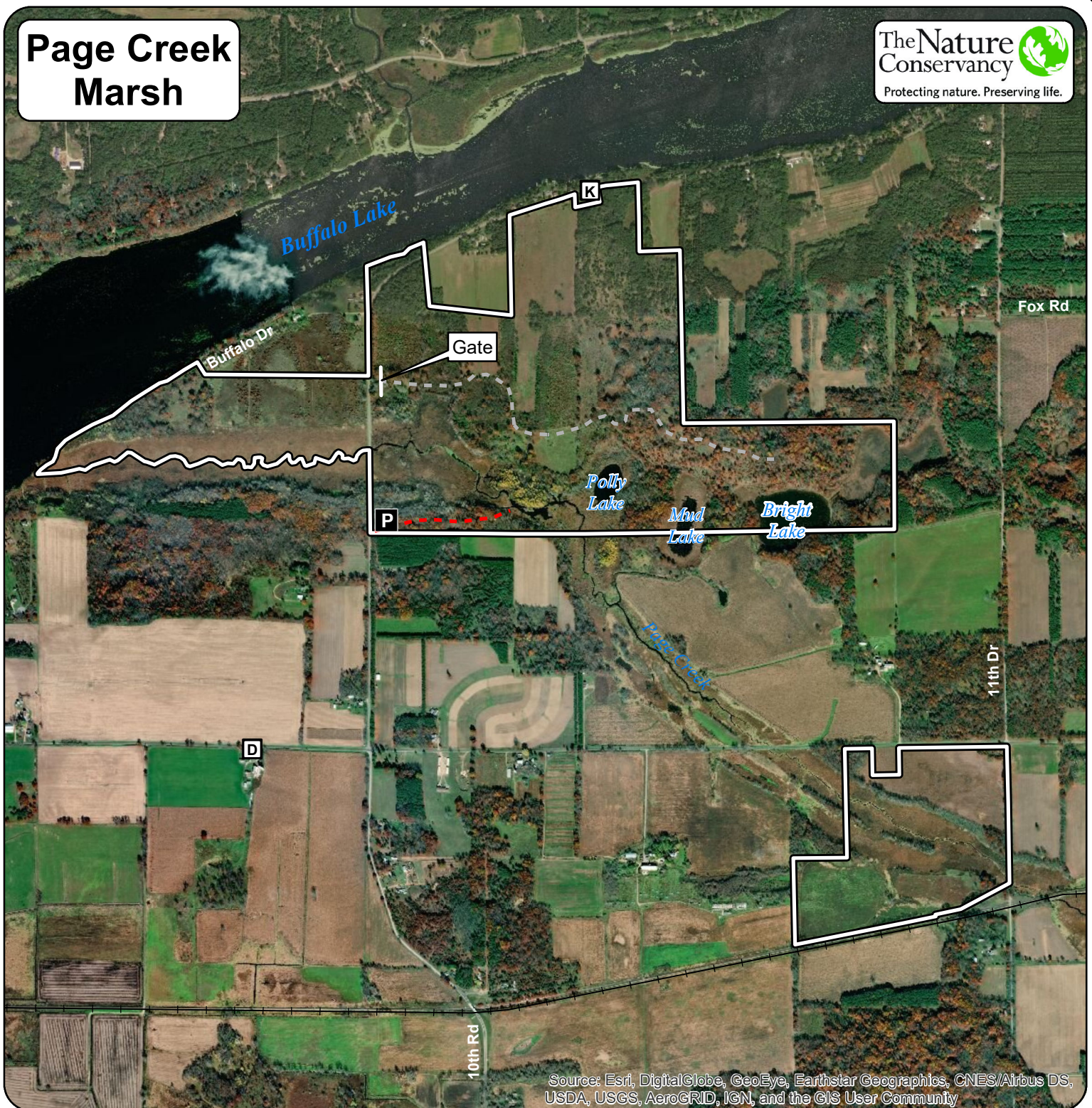




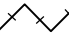


# Page Creek Marsh

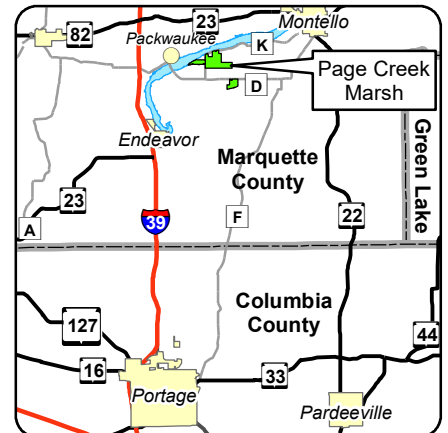


Source: Esri, DigitalGlobe, GeoEye, Earthstar Geographics, CNES/Airbus DS, USDA, USGS, AeroGRID, IGN, and the GIS User Community

-  Preserve Boundary
-  Parking
-  Marsh Trail ~ 0.25 miles
-  Secondary Trail ~ 1.1 miles
-  Railroad Tracks

Directions from Portage: Drive north about 15 miles on U.S. Hwy 51. Pass through Endeavor, then take Cnty Hwy D east to Packwaukee. Still on Cnty D, cross Buffalo Lake and travel about 1.75 miles to Cnty Hwy K. Take Cnty K north about 0.5 miles to the Page Creek Marsh parking area on the right (east). If you cross the creek, you've gone 0.25 miles too far.

**Wisconsin Office**  
633 W Main St.  
Madison, WI 53703  
608-251-8140  
[wisconsin@tnc.org](mailto:wisconsin@tnc.org)



0 0.1 0.2 0.3 0.4 0.5 Miles



2/15/2019